

AWAKEN  
YOUR  
SENSES

OXFORD  
ANC-HD100

WIRELESS HI-FI  
ANC EARPHONES



USER GUIDE

  
uandsound

 Bluetooth™



 ANC

WIRELESS | SMART | ACTIVE NOISE CANCELLATION

## OXFORD ANC-HD 100 PRODUCT PARAMETER

**Bluetooth version:** 5.1

**Maximum noise reduction level:** 26 +-3dB

**Sensitivity (SPK):** 110 dB SPL@1Khz

**Load impedance:** 32 ohm

**Frequency range:** 20Hz-20Khz

**Charging time:** 90 minutes

**Battery life:** 7 hours

**Rechargeable:** 1000 times

**Water resistant:** IPX5

**Wake up function:** SIRI

**Audio source:** iPhone, iPad, laptop, MP3, MP4, etc.

## POINTS FOR ATTENTION ON BATTERY

---

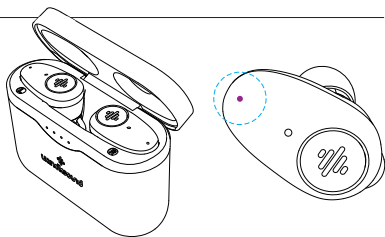
The device can be powered by a built-in rechargeable lithium battery. Charge the device for at least 8 hours before first-time use.

- Rechargeable batteries can only be recharged under adult supervision.
- Only the attached Type-C cable can be used to charge the battery. Wireless charging is also possible. Incorrect charging can damage batteries and equipment.
- Do not attempt to open rechargeable batteries or battery packs. There are no usable parts in it.
- Keep the battery out of reach of children. If children swallowed it, please take them to the hospital immediately.
- Do not throw the battery into the fire, otherwise it may explode. Batteries may also explode if being damaged, please handle and disposal it according to local conditions and regulations.

## ENTER PAIRING MODE

---

Open the charging box cover for the first time, and it is available to enter Bluetooth pairing mode. When connecting other devices, please firstly disconnect or cancel the pairing in the Bluetooth control panel, the earphone will enter standby state after disconnecting.

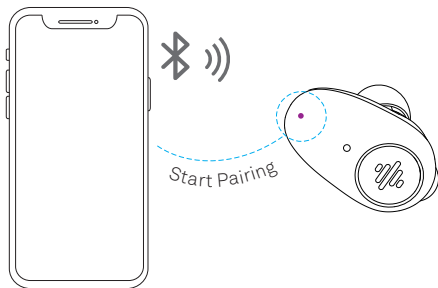


## START PAIRING

---

Open the "Bluetooth" function on the phone, search for "ANC-HD100" and click to connect. When the blue and white indicator lights are off, the pairing will be successful.

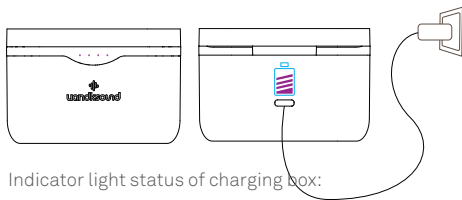
After taking out the earphone from the charging box, if it is not used for about three minutes, the earphone will automatically shut down to save power.



## CHARGING TO THE CHARGING BOX

---

Connect the attached USB type-c cable to the USB interface of the charging box to charge the earphone. It takes about 1.5 hours to fully charge the earphone and charging box.



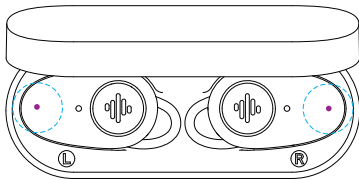
Indicator light status of charging box:

- White light flashing: being charging
- 1 white light on: insufficient power
- 4 white lights on: charging completed

## MOBILE CHARGING

---

Put the earphone into the charging box, and pay attention to the left and right sides. The magnetic suction of the charging box will adjust the earphone to the right position. It takes about 2 hours for the earphone to be fully charged on the left/right. Start Charging will be started once upon the blue light is constantly on.



Earphone indicator light status:

- Blue light is constantly on: earphones are being charged
- Blue light is off: earphones are fully charged

## OPERATION OF THE TOUCH PANEL

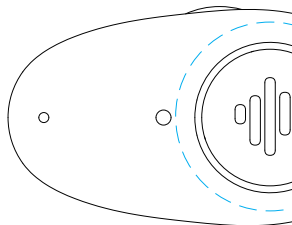
---

### L - LEFT EAR

- **SINGLE CLICK**  
Play/Pause music  
Incoming/Receiving calls
- **DOUBLE CLICK**  
ANC on/off  
Answering calls (hang up)
- **TRIPLE CLICK**  
Voice Wake Up (SIRI)
- **LONG PRESS 3 SG**  
Previous song  
Incoming call/Reject
- **LONG PRESS 5 SG**  
Turn it off
- **12 SG CONTINUOUSLY**  
Restore factory settings

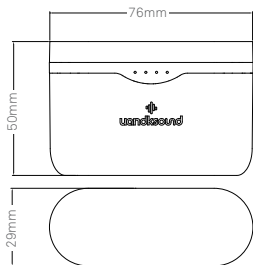
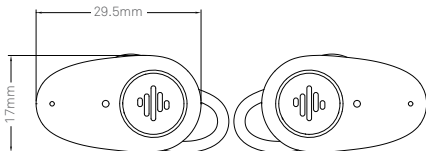
### R - RIGHT EAR

- **SINGLE CLICK**  
Play/Pause music  
Incoming/Receiving calls
- **DOUBLE CLICK**  
ANC on/off  
Answering calls (hang up)
- **TRIPLE CLICK**  
Voice Wake Up (SIRI)
- **LONG PRESS 3 SG**  
Next song  
Incoming call/Reject
- **LONG PRESS 5 SG**  
Turn it off
- **12 SG CONTINUOUSLY**  
Restore factory settings



## PRODUCT DIMENSIONS

---



## POINTS FOR ATTENTION

---

1. The risk of hearing loss can be reduced by following the following safety guidelines when using this product:

When connecting the headset, adjust the volume control to a minimum, and then slowly adjust the volume to a comfortable degree. Keep the volume as low as possible. If the volume needs to be increased, please adjust the volume control slowly. And stop using the speaker immediately if you feel unwell in the ear or if you got tinnitus. Using a high volume for a long period of time will make your ears used to such volume, causing permanent damage to your hearing even without any apparent discomfort.

2. If you are wearing a pacemaker or other electronic medical device, you should seek your doctor's advice before using this product.

3. The packaging contains small parts that can endanger children. Therefore, it should be kept out of the reach of children. Swallowing plastic bags can cause suffocation.

4. Do not attempt to disassemble the product or insert any object into the product by yourself, otherwise it may cause a short circuit, which may lead to fire or electric shock.

5. Customer shall not replace or repair any component. Only authorized dealers or repair service center can open finished products. If any part of the product needs to be replaced for any reason (including normal wear and tear and damage or cracking), please contact the vendor.

6. Avoid rain, dampness or contact with other liquids.

7. If the product is overheating, falling or damaged, or the product falls into a medium liquid, please stop using it.

8. Using headphones while driving may be restricted by local laws. Please consult the local authority. Be careful when using this product when you need to devote yourself to something else.

9. Maintenance of built-in battery. The product is powered by rechargeable batteries. New batteries must be recharged and discharged two or three times before their full function be released.

Disconnect from the charger when the battery is fully charged, as overcharging can shorten battery life. When not in usage, the charge in a fully charged battery slowly disappears. Do not place the product near a heat source or expose it to direct sunlight, dust, moisture, rain or mechanical impact. Try to keep the battery temperature between 0°C and 45°C at all times. If the battery is too hot or too cold, the product may not work temporarily, even if it is fully charged.

10. Warning on battery: Improper use of batteries may result in fire or chemical burns. Batteries can explode if damaged.

11. Please refer to the User Manual for Instructions on the charging status indicator lights.

12. When unplugging the power cord or any reinforced parts, please hold the plug and pull it out instead of pulling the cord directly. Do not use the damaged charger.

## POINTS FOR ATTENTION

---

- \*Please use the adapter which is specially provided for this product to charge the battery.
- \*Disposal of batteries shall be done according to local regulations.  
Cycle use the battery as much as possible. Do not dispose of batteries as household waste or throw them into fires, so as to prevent them from exploding,
- \*Unless otherwise specified in this User Guide or the Quick Start Guide, the user shall not remove or replace the battery by himself. Such operations may damage the product.



TOUCH CONTROLS



WIRELESS  
EASY CONNECTION



WAKE UP FUNCTION  
WITH YOUR VOICE



BUILT FOR  
ELITE ATHLETES



LONG BATTERY LIFE



NOISE CANCELLING  
PROCESSOR



TRUE WIRELESS  
STEREO



IPX5  
WATERPROOF



**uandksound**

[www.uandksound.com](http://www.uandksound.com)



Impedance  
32 ohm

Frequency response  
20 Hz - 20 kHz

Sensitivity  
110 dB SPL @ 1 kHz



**FC CE RoHS**  
compliant

